



02. Resilience against natural disasters –
technology for early warning,

Prof. Jorge Alva Hurtado, Chair WFEO
Committee on Disaster Risk
Management





**World Federation of Engineering
Organizations**

Committee on Disaster Risk Management



RESILIENCE AGAINST NATURAL DISASTERS: PIURA RIVER'S EARLY WARNING SYSTEM

TECHNICAL PROPOSAL

PERUVIAN ASSOCIATION OF PROFESSIONAL ENGINEERS

LIMA, 2018

SUSTAINABLE DEVELOPMENT GOALS (SDGS)

6

9

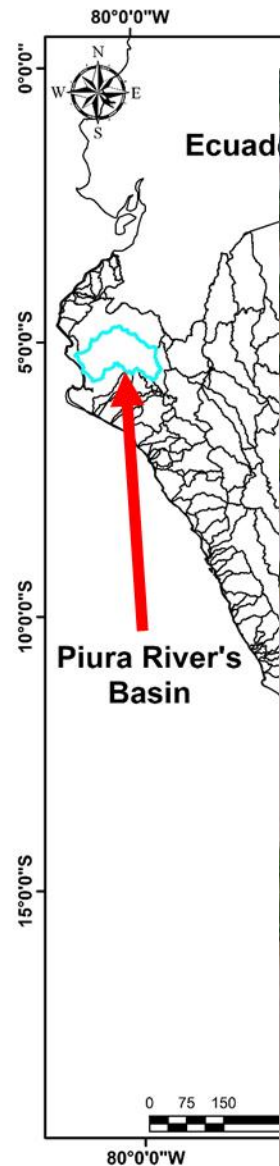
11

13

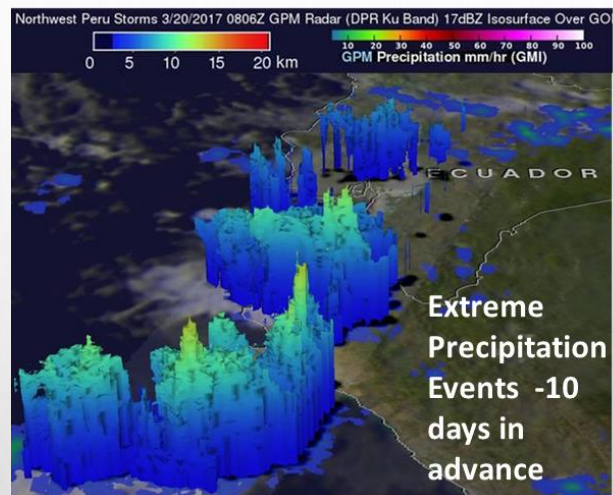
CLIMATE
ACTION



PROJECT LOCATION



PIURA RIVER'S EARLY WARNING SYSTEM



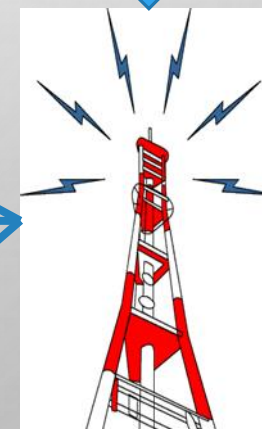
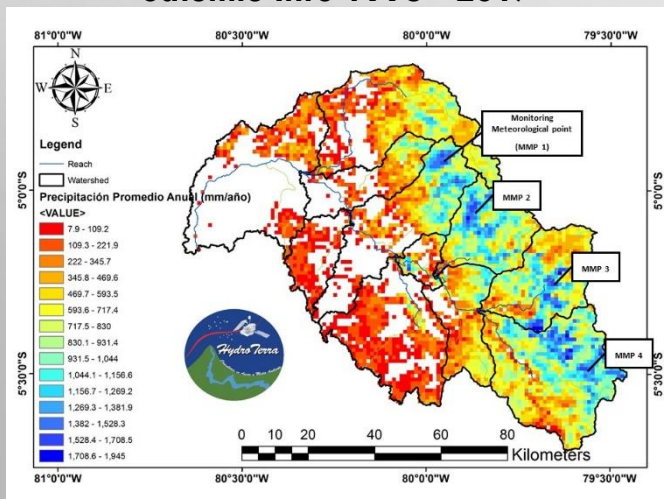
Hydrologic and Hydraulic
Modelling – 10 days in advance



Alert to the Authorities

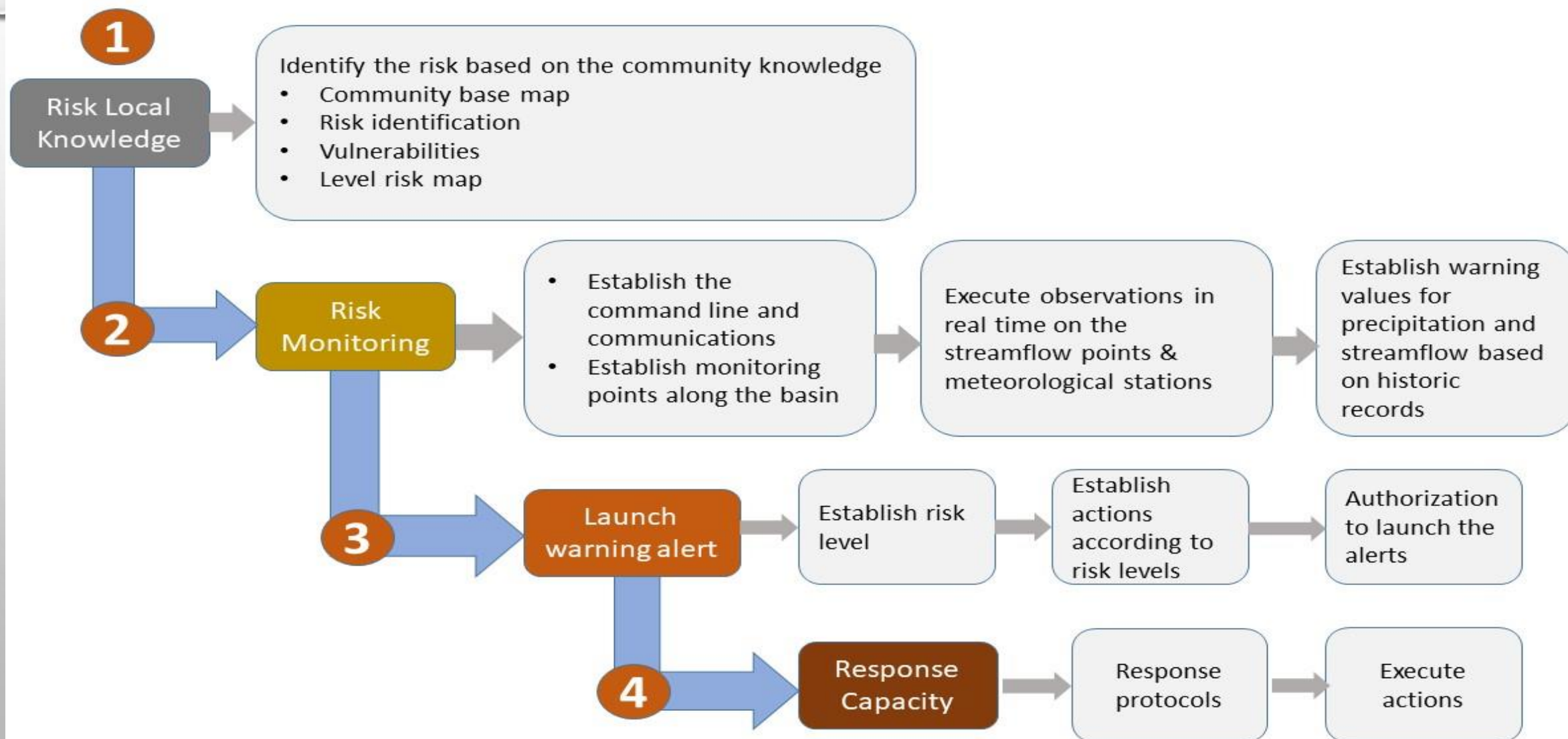


Historical Hydrology Calibration
Satellite Info 1998 - 2017



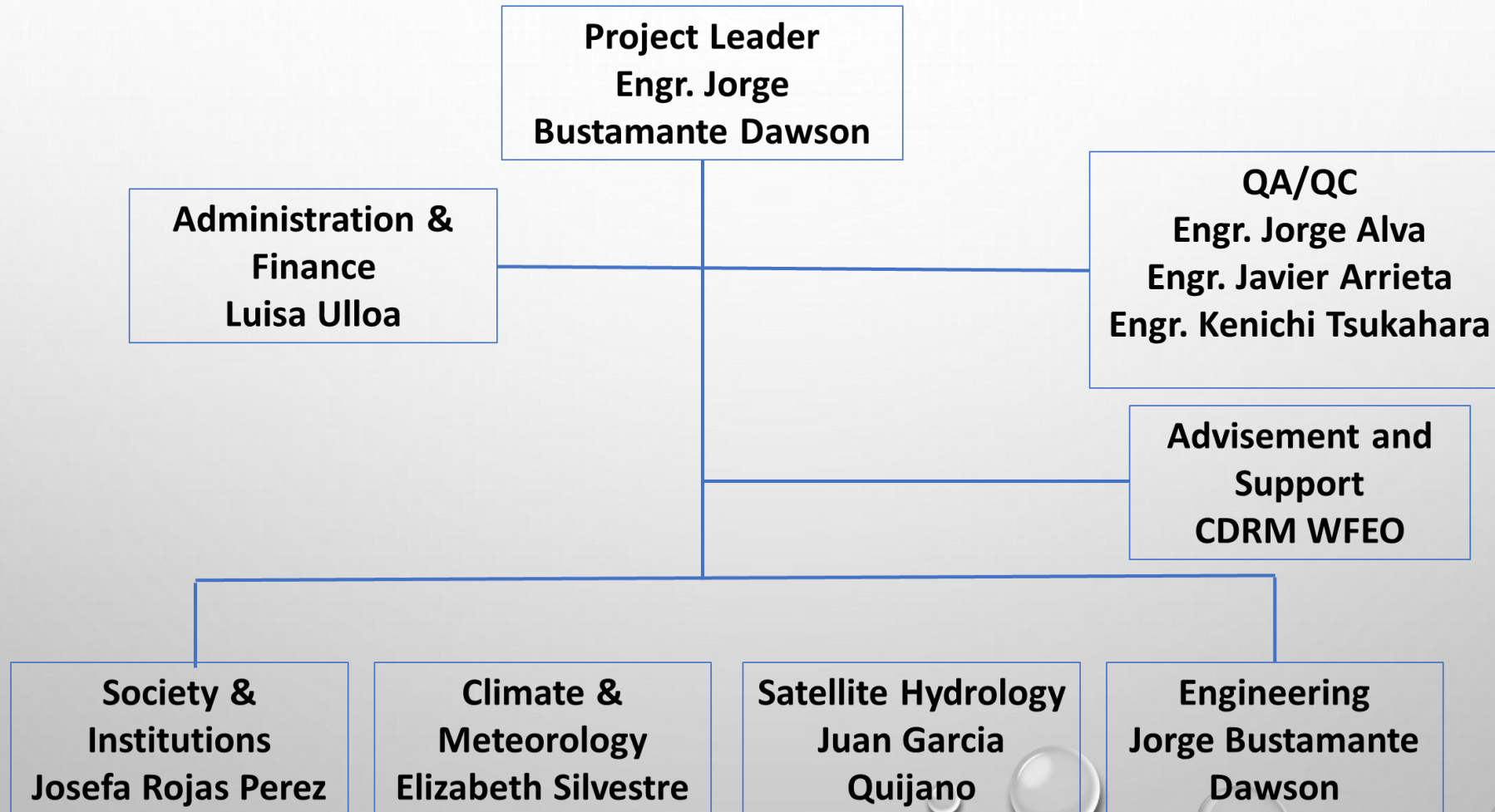
PIURA RIVER'S EARLY WARNING SYSTEM

Structure of the Early Warning System:



PIURA RIVER'S EARLY WARNING SYSTEM

TEAM STRUCTURE OF "PIURA RIVER'S EARLY WARNING SYSTEM"



PIURA RIVER'S EARLY WARNING SYSTEM

International Experience

River and Sea Level

8:42pm Monday 2

River and sea level stations. These levels are expected to rise in the next few days. Enter your location. Or use the map.

Location



Institut für Wasserbau



FEMA

TUHH > WB > S



Navigation



Search



Languages

Institut für Wasserbau
Prof. Dr.-Ing. I
Denickestraße
21 073 Hambu
Tel.: +49 40 4
Fax: +49 40 4
wasserbau.offi

Integrated Public Alert & Warning System

- > Alerting Authorities
- > Private Sector Industry
- > American People
- Governance
- > Components

Informational Materials

Get Involved

Contact Us

20. Februar 2

Das Institut für Wasserbau mit der Universität auf dem Gebiet der Auswirkungen der Auswirkungen der Piura Fluss und Hochwasserschäden sowie in den an flussnahen Ber

El Niño Phänomen Bereich der We



United Nations Office for Disaster

WHO WE ARE

HOME NEWS ARCHIVE

Early warning



France's Secretary of State for Development, Ms. Rachida Dati, and the French ambassador to the United Nations, Mr. Michel Jarraud, listen to her

By Jonathan Fowler

NEW YORK, 29 September 2015 - The United Nations Secretary-General's initiative unveiled at the United Nations

"The goal is that by 2020, a

MISSISSIPPI WEATHER ALERTS

STAY CONNECTED



[Flood Warning issued February 26 at 9:46AM CST until February 28 at 6:00AM CST by NWS](#)

26 February 2018

...The National Weather Service in Jackson has issued a Flood Warning for the following rivers in Mississippi... Chickasawhay River At Enterprise affecting Clarke County The National Weather Service in Jackson has issued a * Flood Warning for The Chickasawhay River At Enterprise

[Flood Warning issued February 26 at 9:45AM CST until further notice by NWS](#)

26 February 2018

...The Flood Warning continues for the following rivers in Mississippi... Big Black River Near Bovina affecting Hinds and Warren Counties Big Black River Near Bentonia affecting Madison and Yazoo Counties ...Flood Warning extended until further notice... The Flood Warning continues for The Big Black River Near Bovina



BE PREPARED

Disaster Preparedness Saves Lives and Property.

LEARN MORE